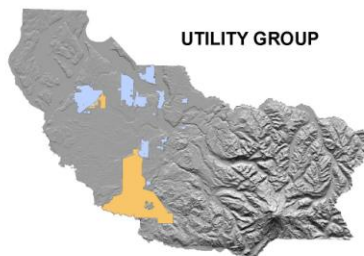
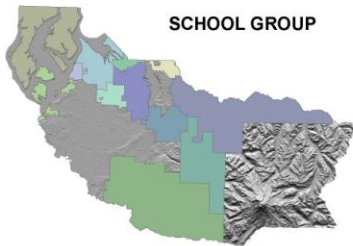
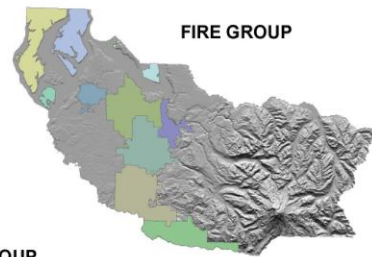
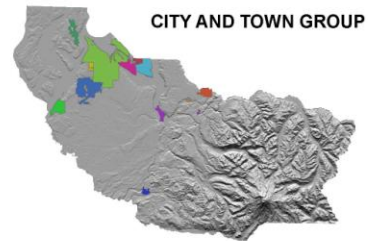
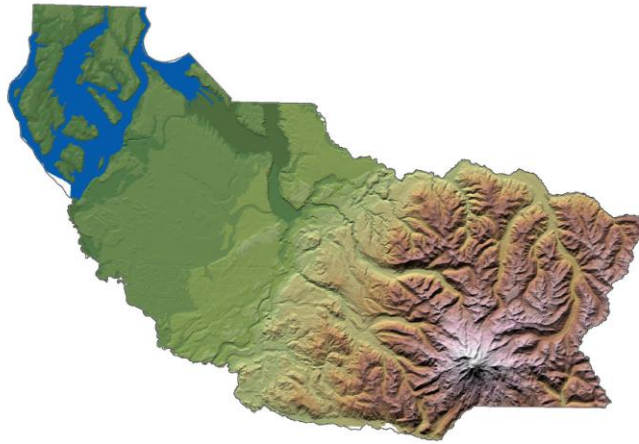


Region 5 Hazard Mitigation Plan

November 2008-2013 Edition



Lakewood Fire Department
Gig Harbor Fire & Medic One
Central Pierce Fire & Rescue
Pierce County Fire District #8
Pierce County Fire District #13
South Pierce Fire & Rescue
Key Peninsula Fire Department
Pierce County Fire District #18
Graham Fire and Rescue
Pierce County Fire District #23
Pierce County Fire Protection District #27

Clear Lake Water District
Graham Hill Mutual Water Company
Fruitland Mutual Water Company
Lakeview Light and Power
Lakewood Water District
Mt. View-Edgewood Water Company
Ohop Mutual Light Company
Port Tacoma
Summit Water and Supply Company
Valley Water District

Carbonado School District
Dieringer School District
Eatonville School District
Fife School District
Franklin School District
Orting School District
Pacific Lutheran University
Peninsula School District
Puyallup School District
Stellacoom Historical District
Tacoma School District
University Place School District
White River School District

City of Buckley
City of Dupont
City of Edgewood
City of Fife
City of Fircrest
City of Gig Harbor
City of Lakewood
City of Milton
City of Orting
City of Tacoma
Town of Eatonville
Town of South Prairie
Town of Wilkeson



Breaking the Disaster Cycle: Planning For Sustainable Communities

SPECIAL ACKNOWLEDGEMENTS:

CITY AND TOWN GROUP	SCHOOL GROUP
<p><i>To the City and Town Councils of:</i> City of Buckley City of DuPont Town of Eatonville City of Edgewood City of Fife City of Fircrest City of Gig Harbor City of Lakewood City of Milton City of Orting City of Tacoma Town of South Prairie Town of Wilkeson</p>	<p><i>To the Boards of Directors of:</i> Carbonado School District Dieringer School District Eatonville School District Fife School District Franklin Pierce School District Orting School District Pacific Lutheran University Peninsula School District Puyallup School District Steilacoom Historical School District Tacoma Public Schools University Place School District White River School District</p>
FIRE GROUP	UTILITY GROUP
<p><i>To the Board and Fire Commissioners of:</i> American Red Cross-Mt. Rainier Chapter Lakewood Fire Department Gig Harbor Fire & Medic One Central Pierce Fire & Rescue Pierce County Fire District #8 Pierce County Fire District #13 South Pierce Fire & Rescue Key Peninsula Fire Department Pierce County Fire District #18 Graham Fire & Rescue Pierce County Fire District #23 Pierce County Fire Protection District #27</p>	<p><i>To the Boards and Commissioners of:</i> Clear Lake Water District Fruitland Mutual Water Company Graham Hill Mutual Water Company Lakeview Light and Power Lakewood Water District Mt. View-Edgewood Water Company Ohop Mutual Light Company Port of Tacoma Summit Water and Supply Company Valley Water District</p>

DIRECTOR OF PIERCE COUNTY DEPARTMENT OF EMERGENCY MANAGEMENT

Steve Bailey

FUNDING ACKNOWLEDGEMENTS:

This plan was financed by grant funding from the Washington State Military Department, Emergency Management Division and the Federal Emergency Management Agency under the Pre-Disaster Mitigation Grant Program.

GEOGRAPHIC INFORMATION SYSTEMS (GIS) MAPS:

Pierce County Department of Emergency Management developed all of the maps included in this plan. The information on the maps in this plan was derived from Pierce County GIS and other sources. Care was taken in the creation of these maps, but is provided “as is.” Pierce County cannot accept any responsibility for any errors, omissions or positional accuracy, and therefore, there are no warranties that accompany these products (the maps). Users are cautioned to field verify information on this product before making any decisions.

PREPARED BY:

Pierce County Department of Emergency Management
2501 South 35th Street, Suite D
Tacoma, WA 98409-7405
(253) 798-7470
<http://www.co.pierce.wa.us/PC/>

Luke Meyers – Project Lead

Diane M Schurr, Benjamin Pierson, Richard Schroedel, Debbie Bailey-Project Team

REGION 5 HAZARD MITIGATION PLAN

Table of Contents

EXECUTIVE SUMMARY.....	1
REGION 5 PLAN PROCESS.....	SECTION 1
REGION 5 PLAN PROFILE.....	SECTION 2
REGION 5 CAPABILITY IDENTIFICATION	SECTION 3
REGION 5 RISK ASSESSMENT (INTRODUCTION)	SECTION 4
REGION 5 RISK ASSESSMENT – GEOLOGICAL	SECTION 4.G
AVALANCHE HAZARD	SUB-SECTION 4.G1
EARTHQUAKE HAZARD	SUB-SECTION 4.G2
LANDSLIDE HAZARD	SUB-SECTION 4.G3
TSUNAMI HAZARD	SUB-SECTION 4.G4
VOLCANO HAZARD	SUB-SECTION 4.G5
REGION 5 RISK ASSESSMENT – METEOROLOGICAL	SECTION 4.M
CLIMATE CHANGE HAZARD	SUB-SECTION 4.M1
DROUGHT HAZARD	SUB-SECTION 4.M2
FLOOD HAZARD	SUB-SECTION 4.M3
SEVERE WEATHER HAZARD	SUB-SECTION 4.M4
WUI FIRE HAZARD	SUB-SECTION 4.M5
REGION 5 MITIGATION STRATEGY.....	SECTION 5
REGION 5 INFRASTRUCTURE	SECTION 6
REGION 5 PLAN MAINTENANCE	SECTION 7
ADDENDA	
City and Town Group	Addendum A
CITY OF BUCKLEY	ADDENDUM A-1
CITY OF DUPONT.....	ADDENDUM A-2
TOWN OF EATONVILLE.....	ADDENDUM A-3
CITY OF EDGEWOOD.....	ADDENDUM A-4
CITY OF FIFE.....	ADDENDUM A-5
CITY OF FIRCREST	ADDENDUM A-6
CITY OF GIG HARBOR.....	ADDENDUM A-7
CITY OF LAKEWOOD.....	ADDENDUM A-8
CITY OF MILTON.....	ADDENDUM A-9
CITY OF ORTING.....	ADDENDUM A-10
TOWN OF SOUTH PRAIRIE.....	ADDENDUM A-11
CITY OF TACOMA.....	ADDENDUM A-12
TOWN OF WILKESON.....	ADDENDUM A-13

School Group	Addendum B
CARBONADO SCHOOL DISTRICT.....	ADDENDUM B-1
DIERINGER SCHOOL DISTRICT	ADDENDUM B-2
EATONVILLE SCHOOL DISTRICT	ADDENDUM B-3
FIFE SCHOOL DISTRICT	ADDENDUM B-4
FRANKLIN PIERCE SCHOOL DISTRICT	ADDENDUM B-5
ORTING SCHOOL DISTRICT	ADDENDUM B-6
PACIFIC LUTHERAN UNIVERSITY	ADDENDUM B-7
PENINSULA SCHOOL DISTRICT	ADDENDUM B-8
PUYALLUP SCHOOL DISTRICT	ADDENDUM B-9
STEILACOOM HISTORIC SCHOOL DISTRICT	ADDENDUM B-10
TACOMA PUBLIC SCHOOLS	ADDENDUM B-11
UNIVERSITY PLACE SCHOOL DISTRICT	ADDENDUM B-12
WHITE RIVER SCHOOL DISTRICT	ADDENDUM B-13

Fire Group	Addendum C
AMERICAN RED CROSS, MT RAINIER CHAPTER	ADDENDUM C-1
LAKWOOD FIRE DISTRICT (PCFD #2)	ADDENDUM C-2
GIG HARBOR FIRE & MEDIC ONE (PCFD #5)	ADDENDUM C-3
CENTRAL PIERCE FIRE & RESCUE (PCFD #6)	ADDENDUM C-4
PIERCE COUNTY FIRE DISTRICT #8	ADDENDUM C-5
BROWNS POINT FIRE DISTRICT (PCFD #13)	ADDENDUM C-6
SOUTH PIERCE FIRE & RESCUE (PCFD #15)	ADDENDUM C-7
KEY PENINSULA FIRE DEPARTMENT (PCFD #16)	ADDENDUM C-8
PIERCE COUNTY FIRE DISTRICT #18	ADDENDUM C-9
GRAHAM FIRE & RESCUE (PCFD #21)	ADDENDUM C-10
PIERCE COUNTY FIRE DISTRICT #23	ADDENDUM C-11
PIERCE COUNTY FIRE DISTRICT #27	ADDENDUM C-12

Utility Group	Addendum D
CLEAR LAKE WATER DISTRICT	ADDENDUM D-1
FRUITLAND MUTUAL WATER COMPANY	ADDENDUM D-2
GRAHAM HILL MUTUAL WATER COMPANY	ADDENDUM D-3
LAKEVIEW LIGHT AND POWER COMPANY	ADDENDUM D-4
LAKWOOD WATER DISTRICT	ADDENDUM D-5
MT. VIEW-EDGEWOOD WATER COMPANY	ADDENDUM D-6
OHOP MUTUAL LIGHT COMPANY	ADDENDUM D-7
PORT OF TACOMA	ADDENDUM D-8
SUMMIT WATER AND SUPPLY COMPANY	ADDENDUM D-9
VALLEY WATER DISTRICT	ADDENDUM D-10

APPENDICES

Acronyms	Appendix A
Maps, Figures and Tables	Appendix B
Glossary	Appendix C
Plan Revisions	Appendix D

MAPS, FIGURES AND TABLES

Executive Summary

TABLE ES-1 REGION 5 PLANNING GROUP.....	ES-5
MAP ES-1 CITY AND TOWN PLANNING GROUP	ES-6
MAP ES-2 FIRE PLANNING GROUP	ES-7
MAP ES-3 SCHOOL PLANNING GROUP	ES-8
MAP ES-4 UTILITY PLANNING GROUP	ES-9

Process Section

TABLE 1-1 PLANNING TEAM-CITY AND TOWN GROUP	1-5
TABLE 1-2 PLANNING TEAM-FIRE GROUP	1-7
TABLE 1-3 PLANNING TEAM-SCHOOL GROUP	1-8
TABLE 1-4 PLANNING TEAM-UTILITY GROUP	1-9
TABLE 1-5 PLANNING TEAM MEETINGS	1-10
TABLE 1-6 REGIONAL PLANNING TEAM MEETINGS	1-14
TABLE 1-7 REGION 5 ONE-ON-ONE MITIGATION MEASURES MEETINGS.....	1-15
TABLE 1-8 HAZARD MEETINGS	1-19
TABLE 1-9 FIRST ELECTED OFFICIAL’S MEETINGS	1-20
TABLE 1-10 FINAL ELECTED OFFICIAL’S MEETINGS	1-26
TABLE 1-11 JURISDICTION SITE VISITS	1-32
TABLE 1-12 PUBLIC INVOLVEMENT	1-40
TABLE 1-13 PUBLIC INFORMATION MEETINGS	1-44
TABLE 1-14 PUBLIC INFORMATION MEETINGS	1-46

Profile Section

TABLE 2-1 2000 PIERCE COUNTY CENSUS DATA	2-2
MAP 2-1 PIERCE COUNTY POPULATION CONCENTRATION	2-3
MAP 2-2 PIERCE COUNTY DIGITAL ELEVATION MODEL MAP	2-6
MAP 2-3 PIERCE COUNTY ORTHO MAP	2-7
TABLE 2-2 TEMPERATURE AND PRECIPITATION AVERAGES	2-9
TABLE 2-3 PARCEL SUMMARY.....	2-10
TABLE 2-4 HOUSING SUMMARY	2-10
MAP 2-4 PIERCE COUNTY LAND USE MAP	2-11
TABLE 2-5 EMPLOYMENT PROFILE	2-13

Risk Assessment Section

TABLE 4-1a REGION 5 HAZARD IDENTIFICATION SUMMARY-GEOLOGICAL	4-5
TABLE 4-1b REGION 5 HAZARD IDENTIFICATION SUMMARY-METEOROLOGICAL	4-6
FIGURE 4-1 PRESIDENTIAL DISASTER DECLARATIONS – FEMA REGIONS	4-7
FIGURE 4-2 PRESIDENTIAL DISASTER DECLARATIONS – WASHINGTON STATE	4-8
TABLE 4-2 REGION 5 DISASTER ASSISTANCE SUMMARY	4-9
TABLE 4-3 VULNERABILITY ANALYSIS: REGION 5 AREA SQUARE MILES EXPOSURE	4-10
TABLE 4-4 VULNERABILITY ANALYSIS: REGION 5 LAND PARCELS EXPOSURE	4-11
TABLE 4-5 VULNERABILITY ANALYSIS: REGION 5 POPULATION EXPOSURE	4-12
TABLE 4-6 VULNERABILITY ANALYSIS: REGION 5 INFRASTRUCTURE EXPOSURE	4-13

Geological Hazards

Avalanche

FIGURE 4.G1-1 SLAB AVALANCHE	4.G1-3
MAP 4.G1-1 AREA VULNERABLE TO AVALANCHE	4.G1-5
TABLE 4.G1-1 PIERCE COUNTY AVALANCHES OF RECORD	4.G1-7

Earthquake

FIGURE 4.G2-1 TYPES OF EARTHQUAKES	4.G2-2
MAP 4.G2-1 MAJOR FAULTS IN THE PUGET SOUND BASIN	4.G2-4
MAP 4.G2-2 SEATTLE AND TACOMA FAULT SEGMENTS	4.G2-5
MAP 4.G2-3 PIERCE COUNTY SEISMIC HAZARD	4.G2-7
MAP 4.G2-4 MAJOR PACIFIC NORTHWEST EARTHQUAKES	4.G2-8
TABLE 4.G2-1 NOTABLE EARTHQUAKES FELT IN PIERCE COUNTY	4.G2-9
FIGURE 4.G2-2 SALMON BEACH, TACOMA WA-FOLLOWING FEB 2001 EARTHQUAKE	4.G2-11
FIGURE 4.G2-3 LIQUEFACTION, NIIGATA JAPAN 1964	4.G2-14
FIGURE 4.G2-4 LATERAL SPREADING – MARCH 2001	4.G2-14

Landslide

FIGURE 4.G3-1 NORTHEAST TACOMA-LANDSLIDE 01/2007	4.G3-2
MAP 4.G3-1 PIERCE COUNTY LANDSLIDE AND SOIL EROSION HAZARD	4.G3-4
MAP 4.G3-2 PIERCE COUNTY SHORELINE SLOPE STABILITY AREAS	4.G3-5
TABLE 4.G3-1 NOTABLE LANDSLIDES IN PIERCE COUNTY	4.G3-6
FIGURE 4.G3-2 SKI PARK ROAD-LANDSLIDE 01/31/03	4.G3-7
FIGURE 4.G3-3 SR-165 BRIDGE ALONG CARBON RIVER-LANDSLIDE 2/1996	4.G3-8
FIGURE 4.G3-4 ALDERCREST DRIVE-LANDSLIDE	4.G3-9

Tsunami

FIGURE 4.G4-1 HAWAII 1957-RESIDENTS EXPLORE OCEAN FLOOR BEFORE TSUNAMI	4.G4-2
FIGURE 4.G4-2 HAWAII 1949-WAVE OVERTAKES A SEAWALL	4.G4-3
FIGURE 4.G4-3 PUGET SOUND FAULT ZONE LOCATIONS.....	4.G4-5
FIGURE 4.G4-4 SEATTLE AND TACOMA FAULTS	4.G4-6
FIGURE 4.G4-5 TSUNAMI INUNDATION AND CCRRENT	4.G4-7
FIGURE 4.G4-6 PUGET SOUND LANDSLIDE AREA AND CORRESPONDING TSUNAMIS	4.G4-9
FIGURE 4.G4-7 PUGET SOUND RIVER DELTAS, TSUNAMI EVIDENCE	4.G4-10
FIGURE 4.G4-8 SALMON BEACH, 1949 TSUNAMIGENIC SUBAERIAL LANDSLIDE	4.G4-12
FIGURE 4.G4-9 PUYALLUP RIVER DELTA-SUB-MARINE LANDSLIDES	4.G4-14
FIGURE 4.G4-10 PUYALLUP RIVER DELTA-SUB-MARINE LANDSLIDES AND SCARP	4.G4-15
FIGURE 4.G4-11 DAMAGE IN TACOMA FROM THE 1894 TSUNAMI	4.G4-17

Volcanic

FIGURE 4.G5-1 VOLCANIC HAZARDS	4.G5-2
FIGURE 4.G5-2 DEBRIS FLOW AT TAHOMA CREEK, JULY 26, 1988	4.G5-3
FIGURE 4.G5-3 DOUGLAS FIR STUMP-ELECTRON LAHAR DEPOSIT IN ORTING	4.G5-3
FIGURE 4.G5-4 LANDSLIDE FROM LITTLE TAHOMA PEAK-EMMONS GLACIER	4.G5-4
TABLE 4.G5-1 TEPHRA TYPES AND SIZES	4.G5-5
MAP 4.G5-1 LAHARS, LAVA FLOWS, AND PYROCLASTIC HAZARDS OF MT RAINIER	4.G5-6
TABLE 4.G5-2 ESTIMATED LAHAR TRAVEL TIME-LAHAR 10 ₇ to 10 ₈ Cubic Meters Volume	4.G5-8
MAP 4.G5-2 ASHFALL PROBABILITY FROM MT RAINIER	4.G5-9
MAP 4.G5-3 ANNUAL PROBABILITY OF 10 CENT. OR MORE TEPHRA ACCUMULATION	4.G5-9
FIGURE 4.G5-5 CASCADE ERUPTIONS	4.G5-10
TABLE 4.G5-4 MT RAINIER IDENTIFIED TEPHRA, LAST 10,000 YEARS	4.G4-10
TABLE 4.G5-5 PIERCE COUNTY RIVER VALLEY DEBRIS FLOW HISTORY	4.G5-11

Meteorological Hazards

Climate Change

FIGURE 4.M1-1 GLOBAL TEMPERATURE CHANGE 1850 TO 2006	4.M1-2
TABLE 4.M1-1 RECENT AND PROJECTED TEMPERATURES FOR THE PACIFIC NW	4.M1-5
FIGURE 4.M1-2 COMPARISON OF THE SOUTH CASCADE GLACIER FROM 1928 TO 2003	4.M1-9
FIGURE 4.M1-3 LOWER NISQUALLY GLACIER RETREAT: 1912 TO 2001	4.M1-10

Drought

FIGURE 4.M2-1 SEQUENCE OF DROUGHT IMPACTS	4.M2-3
TABLE 4.M2-1 PALMER DROUGHT SEVERITY INDEX	4.M2-4
MAP 4.M2-1 PIERCE COUNTY WATERSHEDS	4.M2-5
FIGURE 4.M2-2 % AREA OF BASIN IN DROUGHT CONDITIONS SINCE 1895	4.M2-6
MAP 4.M2-2 % OF TIME IN SEVERE TO EXTREME DROUGHT: 1895-1995	4.M2-7
MAP 4.M2-3 % OF TIME IN SEVERE TO EXTREME DROUGHT: 1985-1995	4.M2-7
TABLE 4.M2-2 NOTABLE DROUGHTS AFFECTING PIERCE COUNTY	4.M2-8
MAP 4.M2-4 COLUMBIA RIVER BASIN	4.M2-10
MAP 4.M2-5 USDA CLIMATE ZONES-WASHINGTON STATE	4.M2-14

Flood

MAP 4.M3-1 PIERCE COUNTY WATERSHEDS	4.M3-4
MAP 4.M3-2 PIERCE COUNTY FLOOD HAZARD	4.M3-5
MAP 4.M3-3 PIERCE COUNTY REPETITIVE LOSS AREAS	4.M3-6
MAP 4.M3-4 CLEAR CREEK BASIN	4.M3-9
MAP 4.M3-5 REPETITIVE FLOOD LOSS AERIAL PHOTO	4.M3-10
TABLE 4.M3-1 FLOOD HAZARD DECLARED DISASTERS	4.M3-13
FIGURE 4.M3-1 FEB 8, 1996 FLOOD-DEL RIO MOBILE HOMES-PUYALUP RIVER	4.M3-14
FIGURE 4.M3-2 NOV 2006 FLOOD RIVER PARK ESTATES-PUYALLUP RIVER	4.M3-16
FIGURE 4.M3-3 NOV 2006 FLOOD STATE RT 410-PUYALLUP RIVER	4.M3-18
FIGURE 4.M3-4 NOV 2006 FLOOD RAINIER MANOR-PUYALLUP RIVER	4.M3-19

Severe Weather

TABLE 4.M4-1 FUJITA TORNADO DAMAGE SCALE	4.M4-3
FIGURE 4.M4-1 WINDSTORM TRACKS	4.M4-4
MAP 4.M4-1 PIERCE COUNTY SEVERE WEATHER WIND HAZARD-SOUTH WIND EVENT	4.M4-5
MAP 4.M4-2 PIERCE COUNTY SEVERE WEATHER WIND HAZARD-EAST WIND EVENT	4.M4-6
TABLE 4.M4-2 NOTABLE SEVERE WEATHER IN PIERCE COUNTY	4.M4-7
FIGURE 4.M4-2 SNOWSTORM 01/2004 DOWNTOWN TACOMA	4.M4-10
FIGURE 4.M4-3 SATELLITE IMAGE-HANUKKAH EVE WINDSTORM	4.M4-11
FIGURE 4.M4-4 BEFORE/AFTER TORNADO DAMAGE GREENSBURG KS 05/04/07	4.M4-13
FIGURE 4.M4-5 PUBLIC WORKS RESPONDS 2005 SNOWSTORM	4.M4-14
FIGURE 4.M4-6 DOWNED POWER POLE 02/2006 WINDSTORM	4.M4-17
FIGURE 4.M4-7 COUNTY ROAD DECEMBER 2006 WINDSTORM	4.M4-19
FIGURE 4.M4-8 TACOMA NARROWS BRIDGE-NOVEMBER 7, 1940 WINDSTORM	4.M4-22

Wildland Urban Interface Fire

MAP 4.M5-1 WASHINGTON STATE FIRE HAZARD MAP	4.M5-3
MAP 4.M5-2 PIERCE COUNTY FOREST CANOPY	4.M5-4
MAP 4.M5-3 INDUSTRIAL FIRE PRECAUTION LEVEL SHUTDOWN ZONE	4.M5-5
FIGURE 4.M5-1 CARBON COPY FIRE AUGUST 2006	4.M5-6
MAP 4.M5-4 WASHINGTON STATE DNR WILDLAND FIRE STATISTICS: 1973-2007	4.M5-7
TABLE 4.M5-1 DNR WILDLAND RESPONSE SOUTH PUGET SOUND REGION: 2002-2007	4.M5-7
TABLE 4.M5-2 PIERCE COUNTY DNR FIRES	4.M5-8

(This page intentionally left blank)